

# CWM Easy Sinus Kit



Clinical Cases of Socket Lifts  
using CWM Easy Sinus Lift Kit

# Case #1

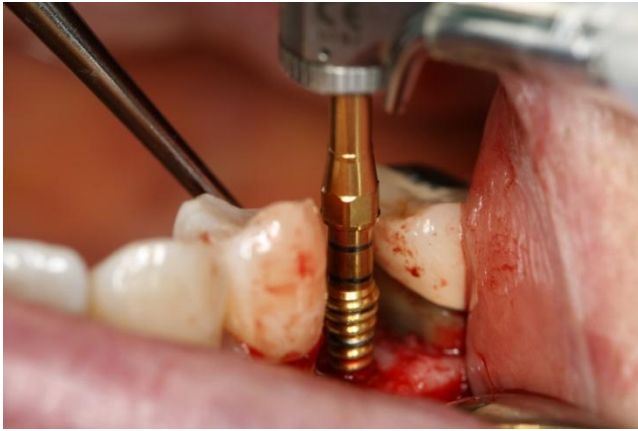
1.



2.



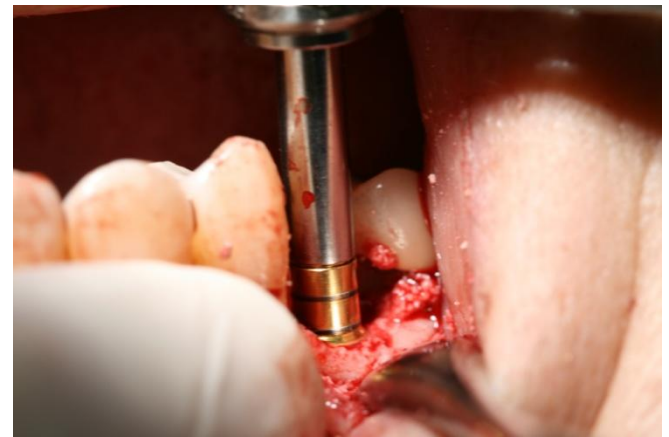
3.



4.

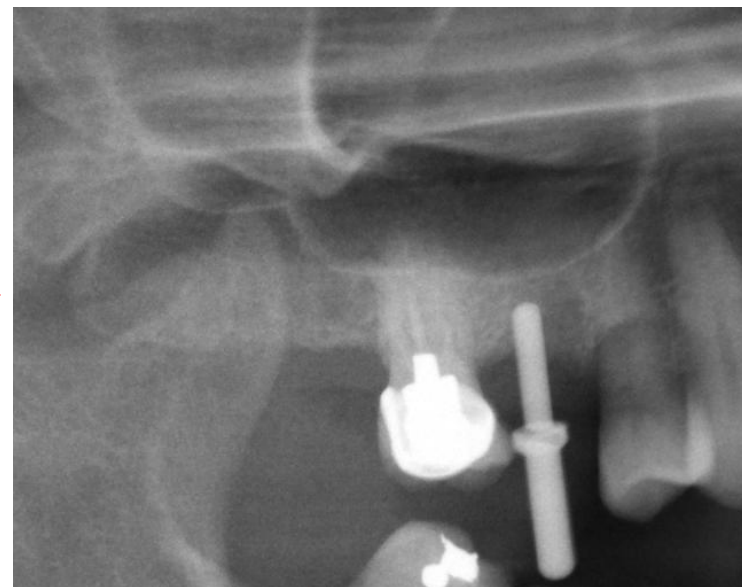
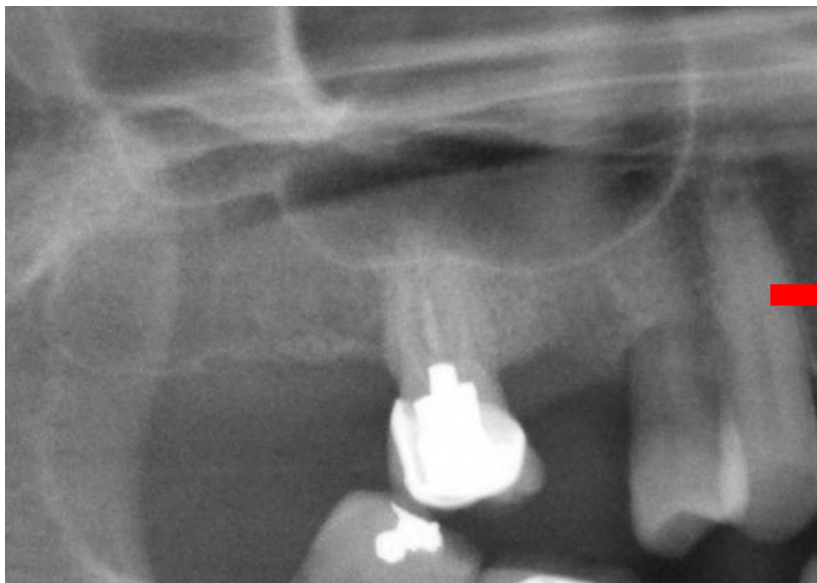


5.

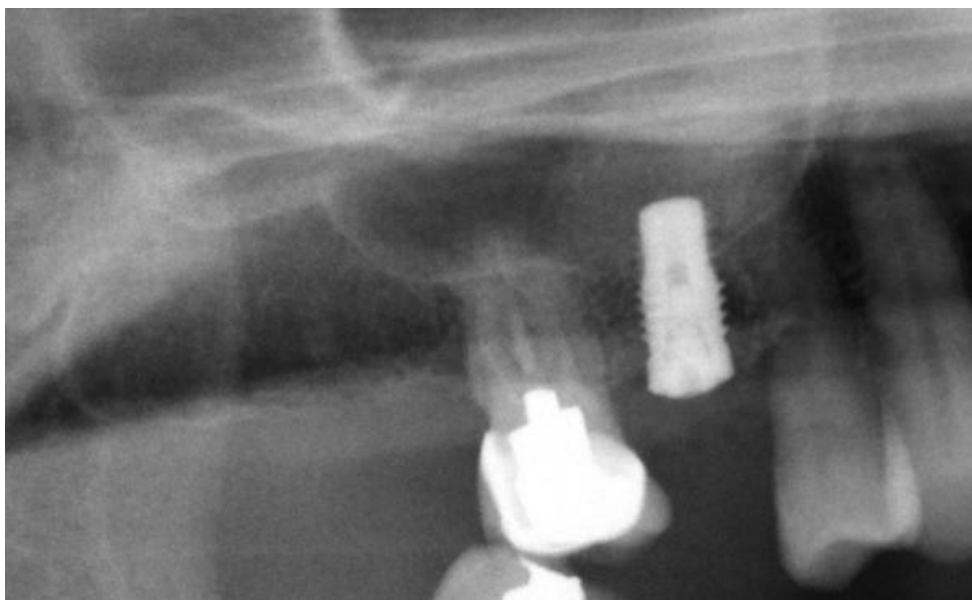


 Case #1

Before



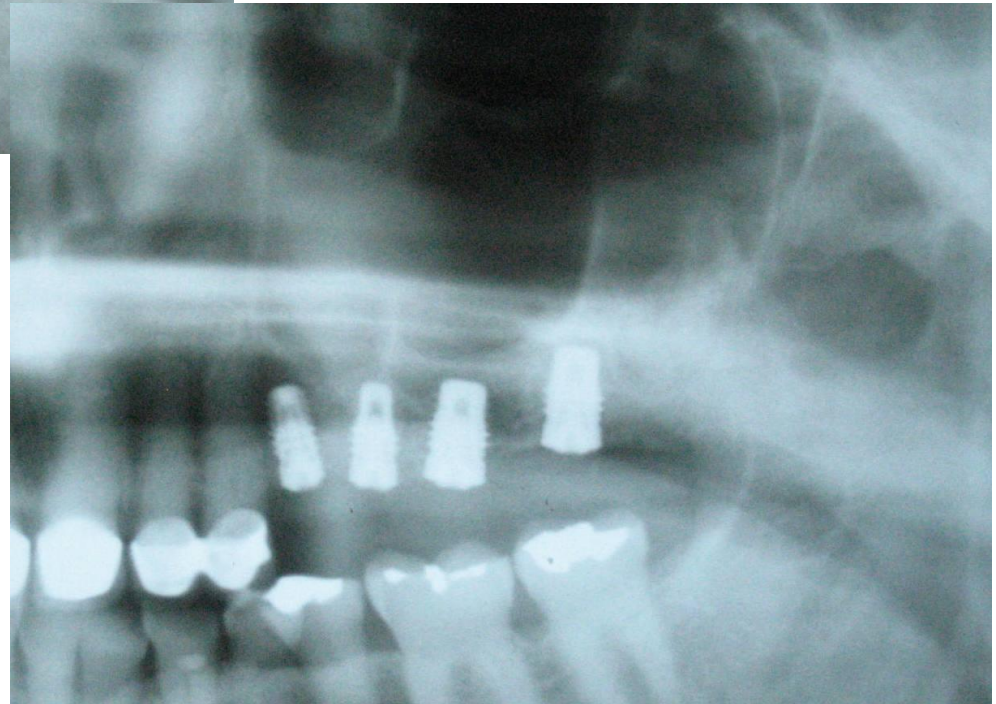
After



Before

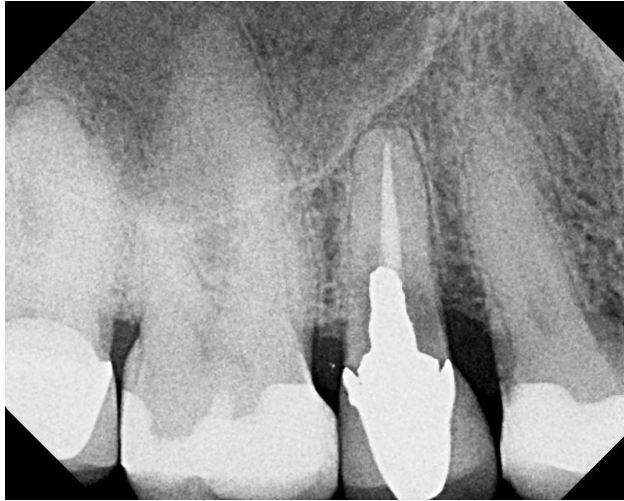


After

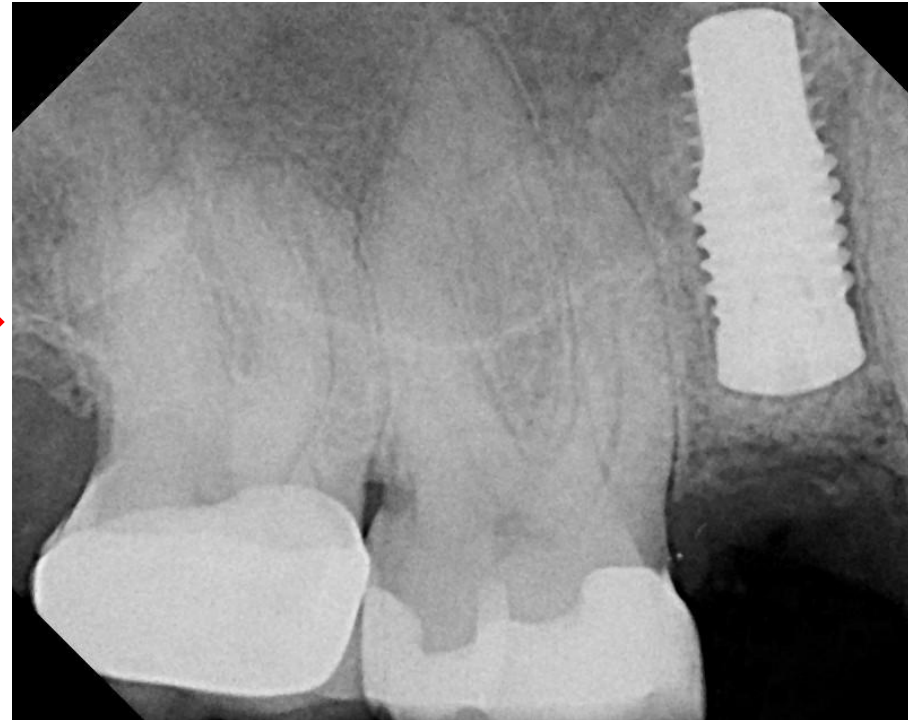


 Case #3

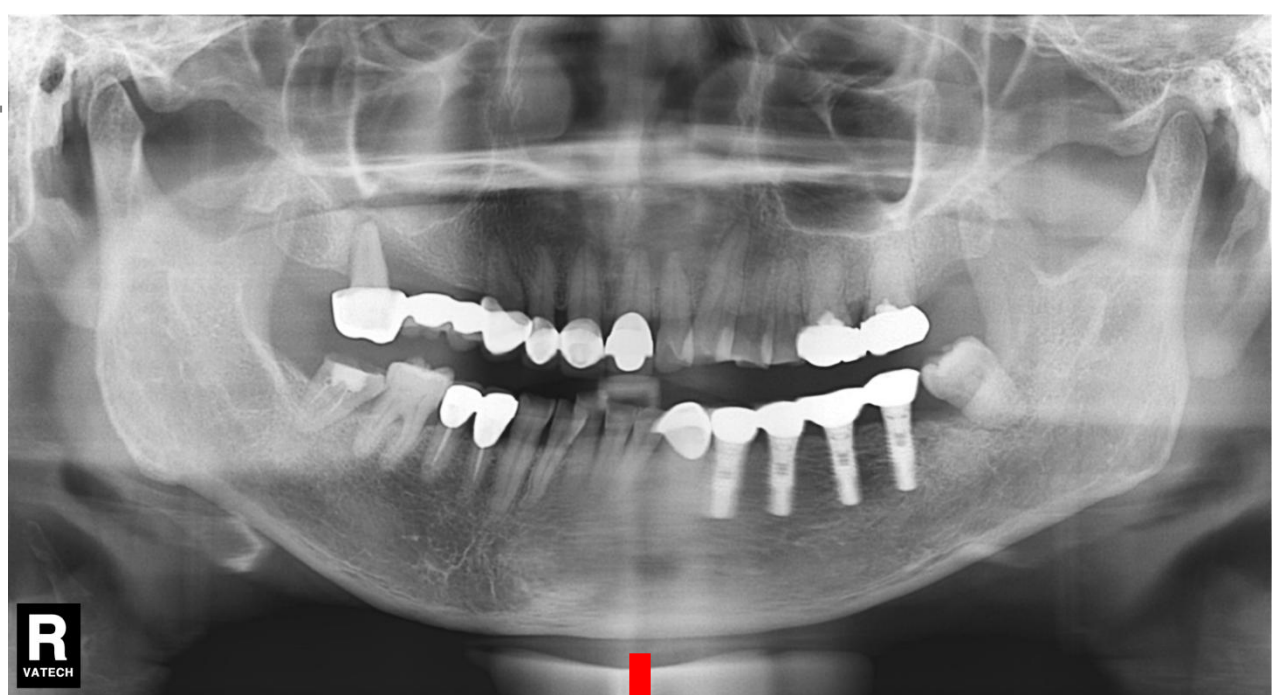
Before



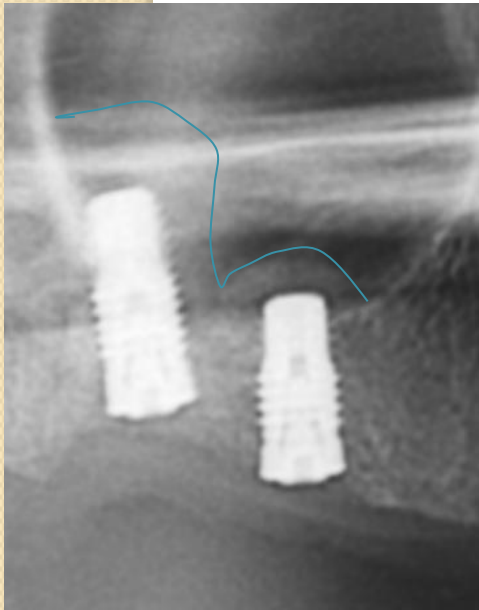
After



Before



After

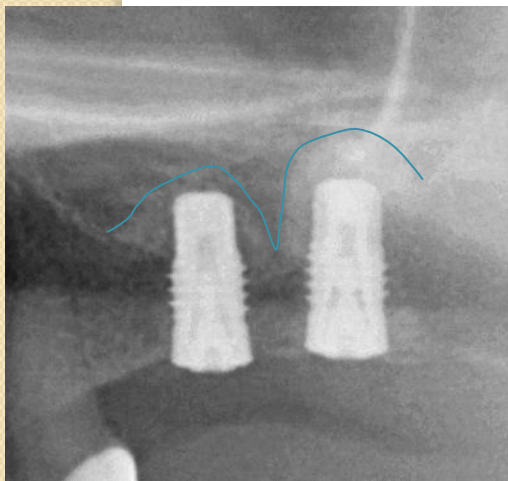


 **Case #4**

Before



After

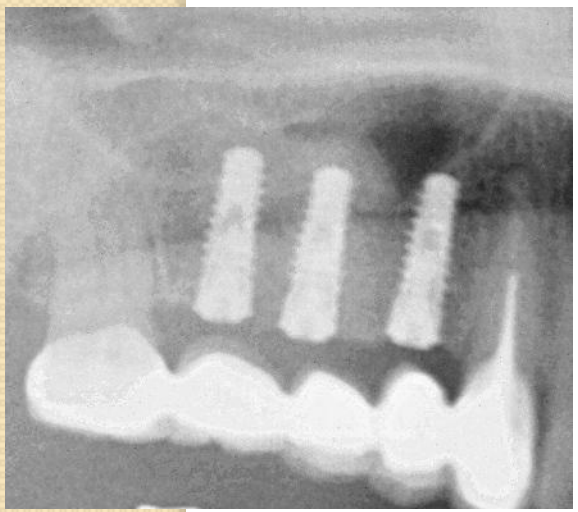
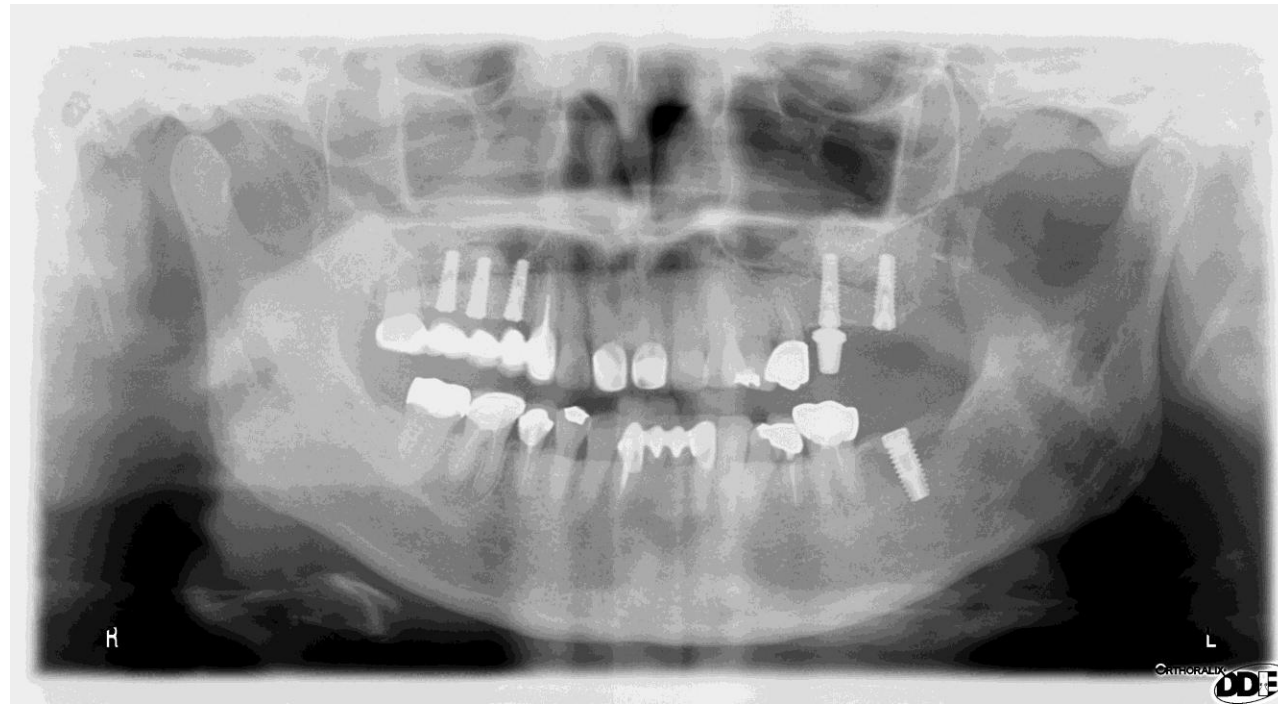


 Case #5

Before



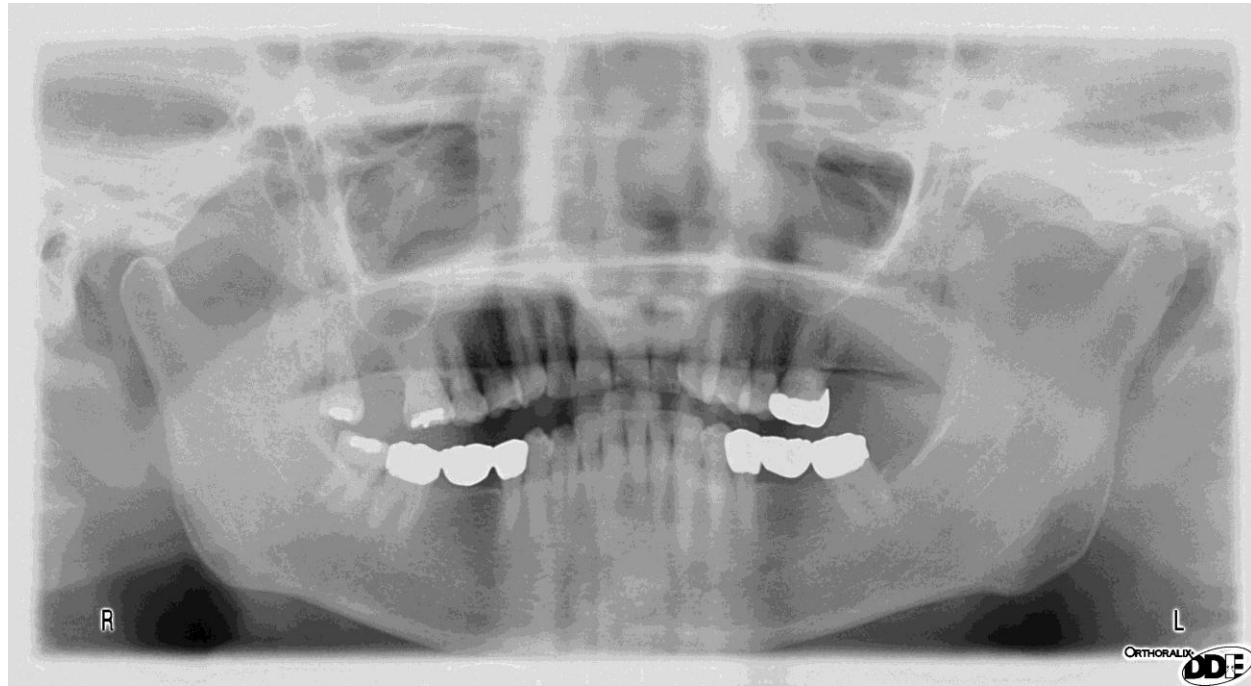
After



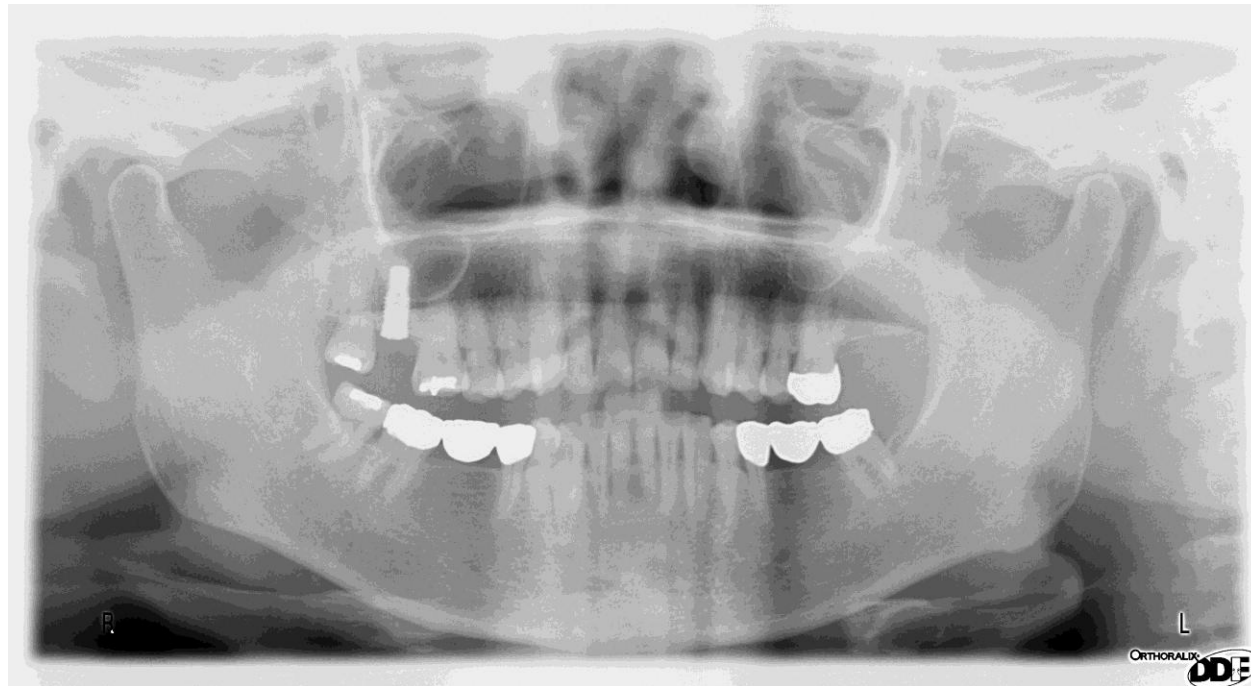
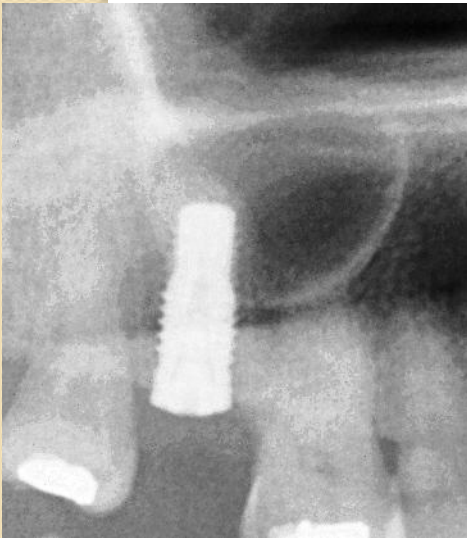


 Case #6

Before

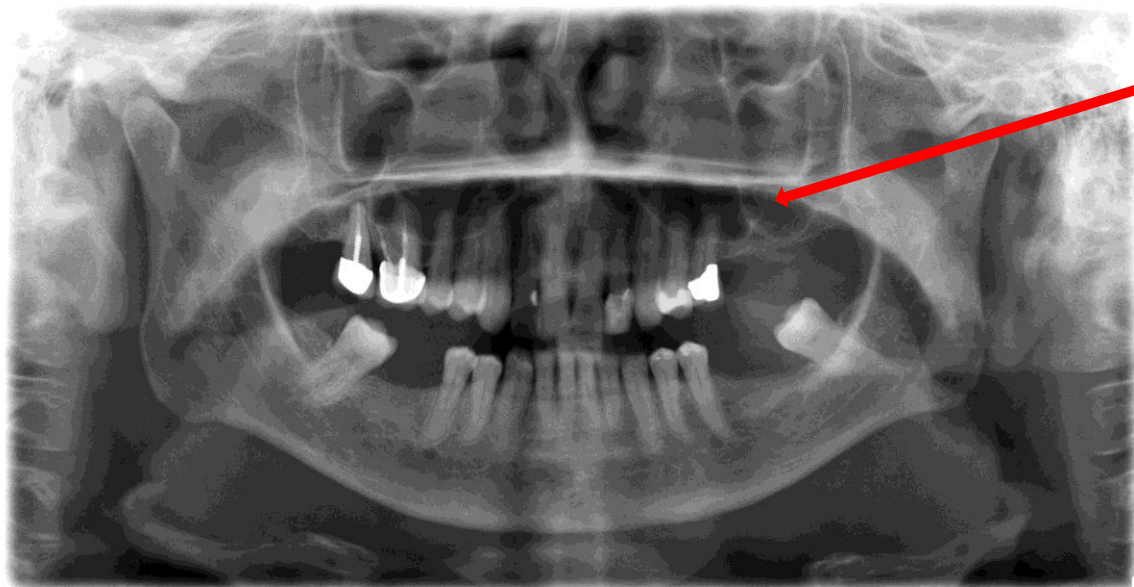


After





# Case #7 – Socket Lift & Lateral Window

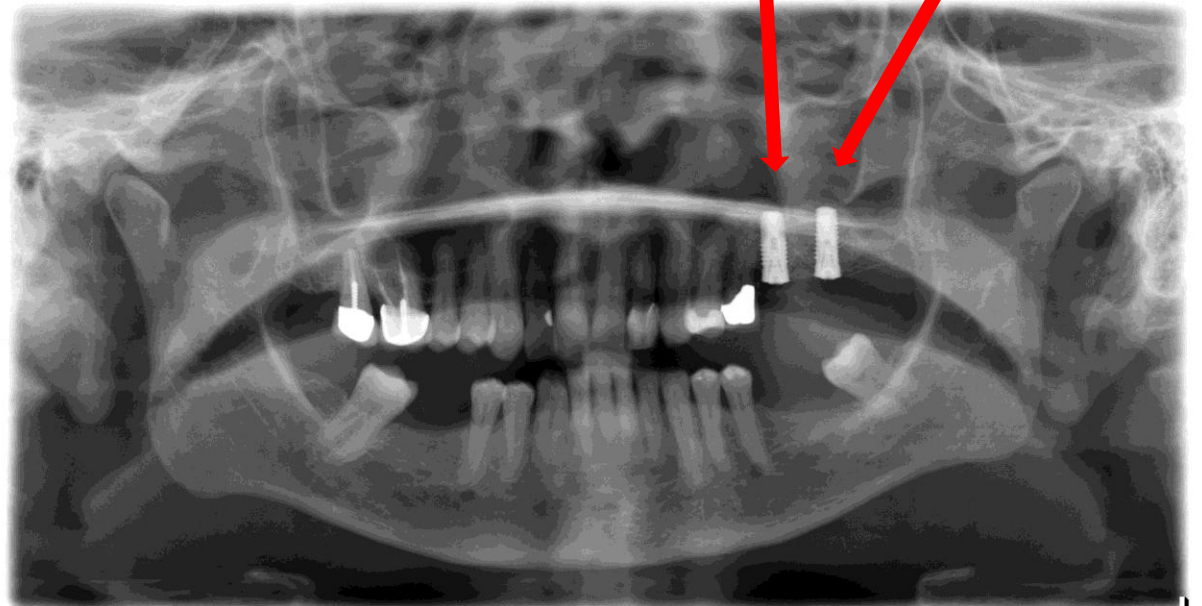


Septa

Socket Lift w/ CWM  
Easy Sinus Lift Kit

Lateral Window  
approach

Before



After



# Case #8 – Socket Lift & Immediate Placement



1. Before



2. Atraumatic Extraction



3.  $\Phi$ 3.2mm spreader



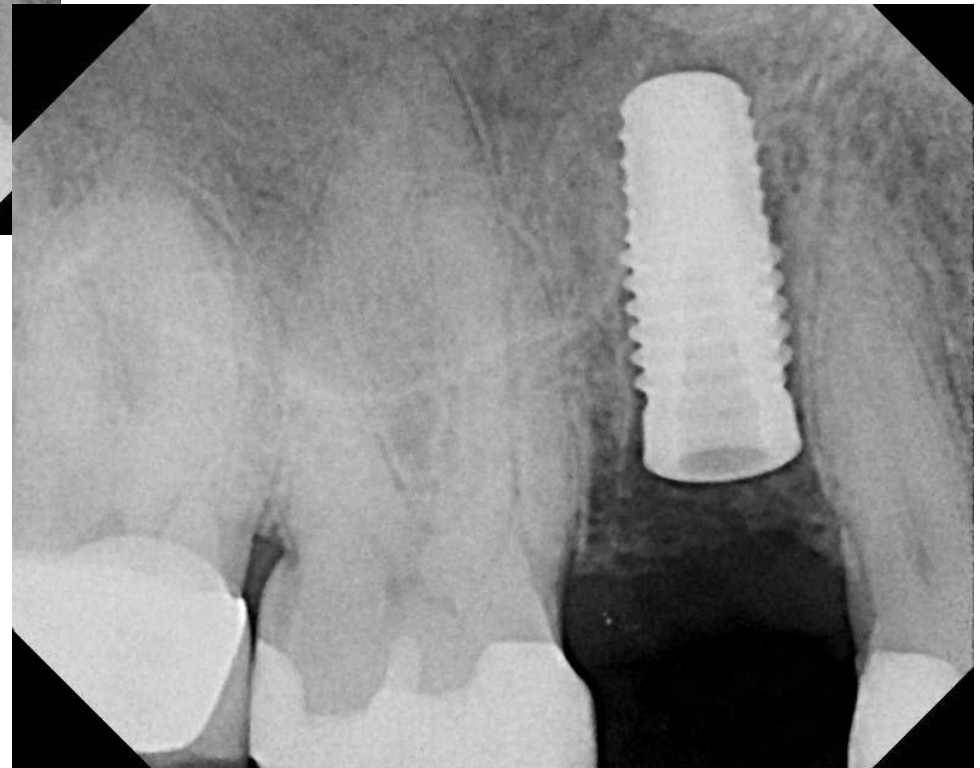
4.  $\Phi$ 3.6mm tap drill



# Case #8 – Socket Lift & Immediate Placement



Before



After

 **Case #9**

1.



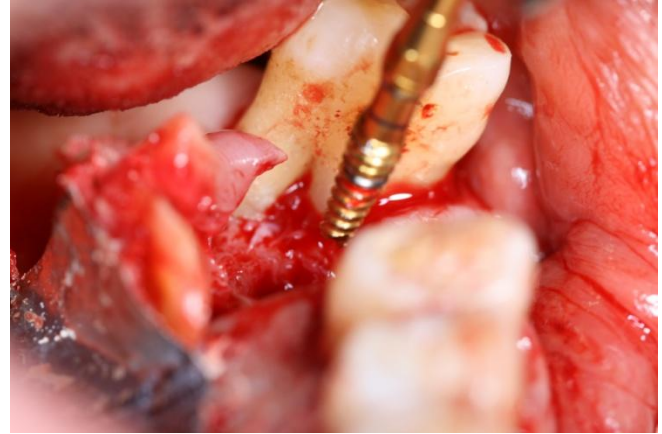
3.



5.



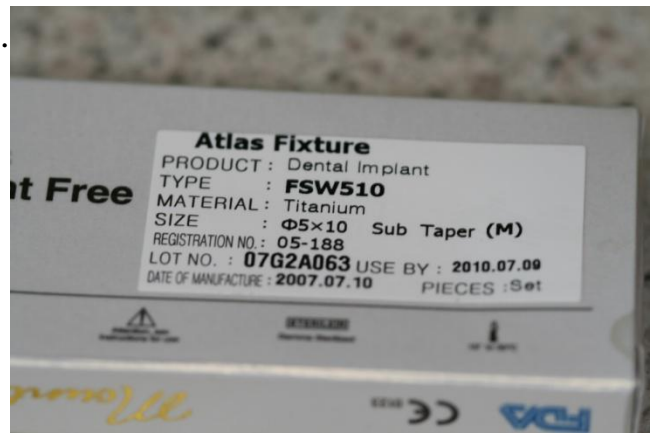
2.



4.



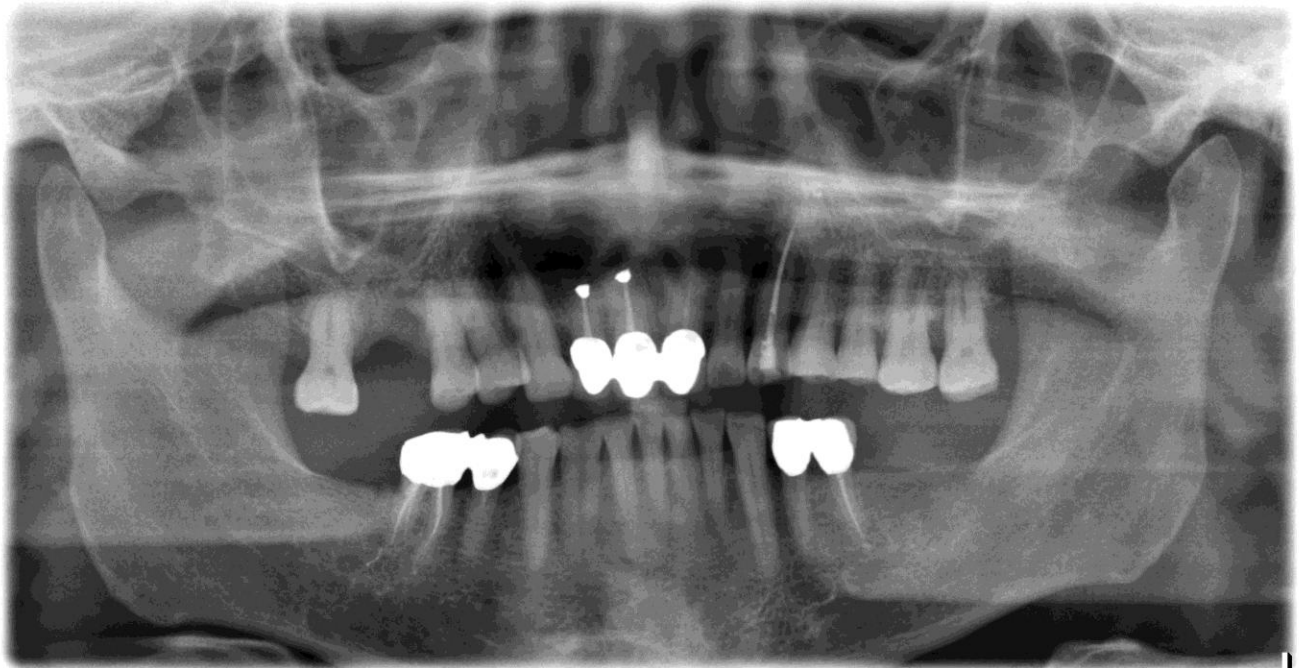
6.



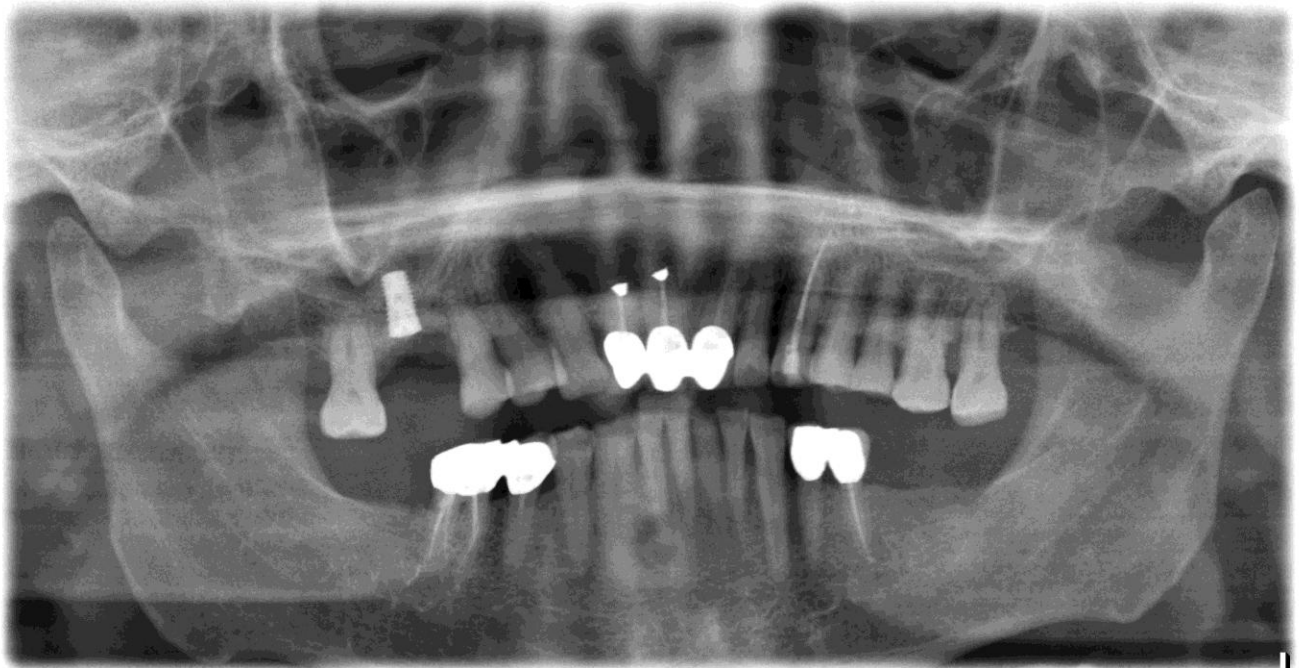


# Case #9

Before



After



 Case #10 – CT Scan

Before



After

